

6th NEWSLETTER

Photo credit: J. Winkler

We are happy to announce the INTEGRAL final conference on 24-25 June 2015 in Brussels, Belgium. After four years of inspiring research cooperation on integrated forest management in European landscapes, it is time to present the main project results. Representatives of the European Parliament, various Directorates-General of the European Commission¹, forest-related interest groups and member state experts at the EU level will discuss together with project partners from 13 European countries how social and natural science can support ongoing forest policy processes and sustainable forest management in Europe. The discussion should result in specific recommendations that will be included in the European Policy Paper, one of the key outputs of INTEGRAL, in early autumn 2015.

Find out more about the conference agenda, keynote speakers and interactive sessions in this newsletter issue!

INTEGRAL FINAL CONFERENCE:

"SUSTAINABLE AND MULTIFUNCTIONAL FOREST MANAGEMENT IN EUROPE: ACHIEVEMENTS, CHALLENGES AND FUTURE POLICY OPTIONS"

Forests cover more than one third of the total land area of the European Union. They represent a key natural resource, which has been managed for decades to meet growing societal demands for diverse forest ecosystem goods and services, including biodiversity conservation, forest recreation and wood production for material and energy use. Today there is a broad perception that the demands for forest ecosystem goods and services will increase in the future. At the same time, European forestry has been faced with challenges from different policies and societal claims that are uncoordinated and often conflict with each other. Challenges and opportunities to address and manage competing forest land-uses are especially prominent at the landscape level, where European and national policies and socio-economic frameworks come into contact with the behaviour of a diversity of forest owners, managers, recreationists, farmers, environmentalists and others.

INTEGRAL has dealt with these topics within twenty case studies in ten European countries and comparative cross-case syntheses. The main goal of the project is to contribute to a better understanding of forest land-use trade-offs in Europe and to explore pathways for the governance of integrated forest management at the landscape level.



IN THIS ISSUE:

I. INTEGRAL FINAL CONFERENCE:

"SUSTAINABLE AND MULTIFUNCTIONAL FOREST MANAGEMENT IN EUROPE: ACHIEVEMENTS, CHALLENGES AND FUTURE POLICY OPTIONS"

II. LATEST ON THE PROJECT

Time: 24-25 June 2015

Venue: Representation of the State of North Rhine-Westphalia to the European Union, Montoyerstraat 47, 1000 Brussels,

Learn more about the INTEGRAL final conference:
www.integral-project.eu/project-events/final-conference.html

¹Such as DG Agriculture and Rural Development; DG Climate; DG Environment; DG Energy; DG Research and Innovation

THE KEYNOTE SPEAKERS OF THE INTEGRAL FINAL CONFERENCE ARE:

Mr. Jeremy Rayner

Professor at the University of Saskatchewan, Canada, INTEGRAL Scientific Advisory Board member, Scientific Keynote Speaker

Presentation title: "Theories of policy integration and practices of sustainable forest management"

Ms. Pia Bucella

Director Natural Capital, DG Environment, European Commission

Presentation title: "Chances and challenges of EU's and member states' policy and management approaches to integrate EU's nature conservation policy (Natura 2000/ Habitats & Birds Directives) and forestry"

Mr. Aldo Longo (to be confirmed)

DG Agriculture and Rural Development, Deputy Director General, in charge of Directorates F, G and H: General aspects of rural development and research

Presentation title: "The view of DG Agriculture in terms of sustainable and multifunctional forestry in the context of the new EU rural development policy and EU forest strategy" (to be confirmed)

Mr. Paul Brannen

Labour Member of the European Parliament for the North East of England, full member of the Committee on Agriculture and Rural Development, and a substitute member of the Committee on Environment, Public Health and Food Safety

Presentation title: "The view of the European Parliament in terms of Sustainable forestry in Europe in the context of the new EU forest strategy, rural development policy and green economy"

Mr. Roland Beck

Forest Director, Head of Forest Division, Office for Food, Agriculture and Forestry Ingolstadt (AELF) Germany

Presentation title: "Chances and challenges of integrative forest management: experiences from Bavaria/Germany"



Photo Credit: Salzburg University of Applied Sciences

At the final conference, the INTEGRAL researchers will present the results of four years of intensive transdisciplinary research collaboration. Participants can look forward to stimulating **key-note speeches** by internationally renowned scientists and policy decision makers as well as to **interactive sessions (World Café "Mini Europe" and workshops on policy recommendations for integrated and future oriented forest management in Europe)**. The latter will provide the conference guests with extensive insight into four years of research on current and future policies, outlining scientifically based findings on socio-economic and ecological drivers and barriers of change in integrated forest land-use in twenty landscapes across ten European countries. In addition, the interactive sessions will allow for the exploration of issues related to integration and balance between forestry and bioenergy use, rural development, nature conservation and the bio-economy across EU, national and local levels.

The conference will include a large number of participants (over 100 from more than 15 countries) who will share their knowledge, experiences and solutions, creating a wide range of networking opportunities and policy relevant recommendations to support sustainable and multifunctional forest management.

Learn more about the INTEGRAL final conference:

www.integral-project.eu/project-events/final-conference.html

LATEST ON THE PROJECT

The main goal of the foresight research in INTEGRAL is to support stakeholders (forest owners and managers) by assessing potential futures in selected European forested landscapes¹. At the same time, it will deliver information on the consequences of likely future developments for sustainable and multifunctional forest management.

During the last few months, around 60 INTEGRAL researchers have worked on regional roadmaps for selected European forested landscapes in the backcasting phase. The roadmaps will describe mixtures of policy instruments and forest management strategies that would likely contribute towards the achievement of desired futures in the case study areas. In June 2015, an overall synthesis of the regional roadmaps will be available on www.integral-project.eu.

„Backcasting is part of the participatory foresight processes in INTEGRAL. The main question of this approach is which policy and management actions should be taken to achieve desired future goals.“

¹Ten countries in twenty case study areas: Bulgaria (Teteven and Yundola); France (Pontenx); Germany (South Munich and Upper Palatinate); Ireland (Newmarket and Western Peatland); Italy (Asiago, Etna, and Molise); Lithuania (Sulvakija and Zemaitia); The Netherlands (South-East Veluwe); Portugal (Chamusca, Leiria National Forest, and Vale de Sousa); Slovakia (Kysuce and Podpolanie); Sweden (Helgeå and Vilhelmina).

At the same time, the team of the Oxford Centre for Tropical Forests (Environmental Change Institute) / United Kingdom is conducting an analysis of the EU's forest footprint and footprint policies, taking into account the results of the backcasting exercises.

The INTEGRAL researchers publish the research outcomes in various scientific journals. Of particular note are the two special issues of the journals *Land Use Policy* and *Forest Policy and Economics*, devoted to different aspects and results of the scientific work in INTEGRAL:

"INTEGRATED FOREST MANAGEMENT IN EUROPE: UTOPIAN POLICIES VERSUS COMPETING PRACTICES" (in *Land Use Policy*)

(Guest editors: Dr. Metodi Sotirov, Senior Researcher, Chair of Forest and Environmental Policy, University of Freiburg, and UNIQUE forestry and land use GmbH, Germany; Prof. Dr. Daniela Kleinschmit, Chair of Forest and Environmental Policy, University of Freiburg, Germany; Prof. Dr. Bas Arts, Professor, Forest and Nature Conservation Policy Group, Wageningen University, the Netherlands)

"ANALYZING THE FUTURE OF EUROPEAN FORESTS: TOOLS, INSIGHTS AND IMPLICATIONS" (in *Forest Policy and Economics*)

(Guest editors: Elmar Schüll, Center for Future Studies, Salzburg University of Applied Sciences, Austria and Marjanke Hoogstra-Klein, Forest and Nature Conservation Policy group, Wageningen University, Netherlands)

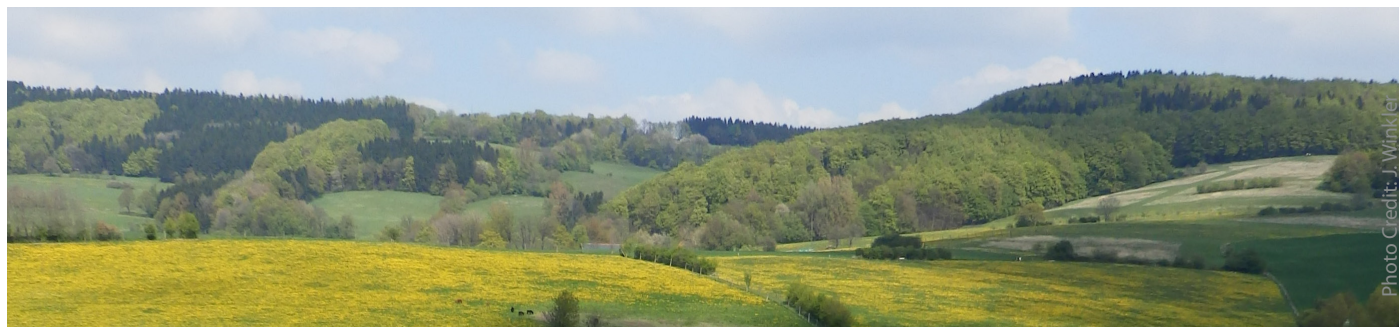
In addition, several INTEGRAL researchers have together produced an article on the sensitivity of forest ecosystem services to forest management on a pan-European scale:

Biber, P., Borges, J.G., Sallnäs, O. et al.¹ (2014) HOW SENSITIVE ARE ECOSYSTEM SERVICES IN EUROPEAN FOREST LANDSCAPES TO SILVICULTURAL TREATMENT? In: *Forests 2014*, 5, 1-x (accepted manuscript)

While sustainable forestry in Europe is characterized by the provision of a multitude of forest ecosystem services, there exists no comprehensive study, which scrutinizes their sensitivity to forest management on a pan-European scale, so far. This paper compiles scenario runs from regionally tailored forest growth models and DSS from 20 case studies throughout Europe and analyzes whether the ecosystem service provision depends on management intensity and other covariables, comprising regional affiliation, social environment, and species composition. The simulation runs provide information about the case-specific most important ecosystem services in terms of appropriate indicators.

Find more publications of INTEGRAL researchers: www.integral-project.eu/projectresults.html

¹Moshammer, R., Barreiro, S., Botequim, B., Brodrechtová, Y., Brukas, V., Chirici, G., Cordero-Debets, R., Corrigan, E., Eriksson, L.O., Favero, M., Galev, E., Garcia-Gonzalo, J., Hengeveld, G., Kavaliauskas, M., Marchetti, M., Marques, S., Mozgeris, G., Navrátil, R., Nieuwenhuis, M., Orazio, C., Paligorov, I., Pettenella, D., Sedmák, R., Smreček, R., Stanislovaite, A., Tomé, M., Trubins, R., Tuček, J., Vizzarri, M., Wallin, I., Pretzsch, H.



INTEGRAL Key Facts

Project acronym: **INTEGRAL**

Project full title: Future-oriented integrated management of European forest landscapes

Project duration: 01.11.2011 – 31.10.2015

Funding scheme: EU FP7 Seventh Framework Programme

Grant agreement no.: 282887

Project Partners:

21 partners from 13 countries

Swedish University of Agricultural Sciences, University of Freiburg, University of Padua, Wageningen University, University of Forestry Sofia, Salzburg University of Applied Sciences, Center for Futures Studies, University of Oxford, The Technical University of Lisbon, University of Molise, Joint Research Centre, Technical University Zvolen, Aleksandras Stulginskis University, Technische Universität München, Fraunhofer MOEZ, EFIATLANTIC, IRSTEA, University College Dublin, The Catholic University of Portugal, CEPF, FERN, EUSTAFOR

Project Coordinator

Prof. Ljusk Ola Eriksson
Swedish University of Agricultural Sciences

Skogsmarksgränd,
SE-901 83 UMEÅ
+ 46 90 786 83 78
ljusk.ola.eriksson@slu.se
maria.nyberg@slu.se
www.slu.se/srh

Scientific Coordinator

Dr. Metodi Sotirov
Chair of Forest and Environmental
Policy, University of Freiburg

Tennenbacher Str. 4
DE-79106 Freiburg

Metodi.Sotirov@ifp.uni-freiburg.de
www.ifp.uni-freiburg.de

Communication and Dissemination

Annamaria Riemer
Fraunhofer MOEZ

Städtisches Kaufhaus Leipzig
Neumarkt 9-19
DE-04109 Leipzig

annamaria.riemer@moez.fraunhofer.de
www.moez.fraunhofer.de